

Moon in june

Trombone 1

by Robert Wyatt

MM104

Transcription by Giovanni Venosta
Arrangement by Ferdinando Farao'

A

On a di le mma — be tween what i need and what i just want

4

Be tween your thighs i feel a sen sa tion — How long can i re sist the tem pta tion I'... — ...

8

ve — got my bird — you've got your ma... an — So who else do

14

Coro

we need rea lly? —

18

21

27

34 B

I can still re me — ber the last time we pla yed on Top —

39

44

50

C *strumentale*

pp

65

Tbone e Fl.

73

79

rit.

D **mm 90** *Swing...*

85

play ing now is

91

love ly here in the B B C we're free to play almost as long and as and as loud as a

96

jazz group or an or che stra on Ra di o Three

102

X3

There are dance halls and theatres with a coustic worse than he re not forgetting the ex tra fa ci

107

li ties su ch as the tea ma chine just a long the co o o o ri dor

112

Pop stars drink each o ther's wine plough each o ther earth

117

ho ping for com pa ni on shi ip and then perh aps re birth plant seeds in

122

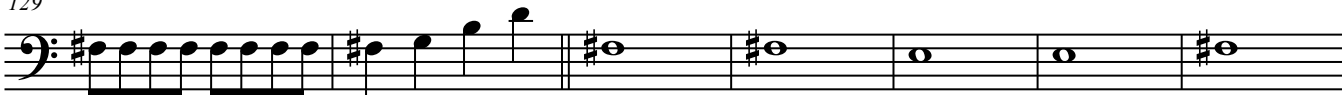
E

Coro

> *Even Eights*

fre sher plots of earth

129



136



144



151



157



G *strumentale*

163



169

H *Coro*



176



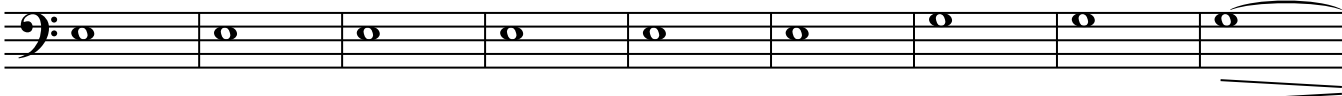
183



189

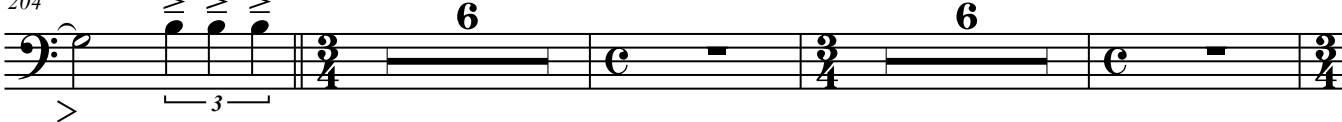


195



204

I mm 200



219

6

Musical staff in bass clef with common time signature. Measure 219 contains a whole rest. Measure 220 contains a whole rest. Measure 221 contains a half note G2, a quarter note F2, a quarter note E2, a quarter note D2, and a quarter note C2, all beamed together.

232

Drums fill...

M sez. solos mm 200

6 mm 80

8

7

L ballad...

Musical staff in bass clef with common time signature. Measure 232 contains a half note G2 and a quarter note F2. Measure 233 contains a whole rest. Measure 234 contains a whole rest. Measure 235 contains a whole rest. The staff is divided into sections of 6, 8, and 7 measures.

256

N mm 80

5

bass

Musical staff in bass clef with common time signature. Measure 256 contains a whole rest. Measure 257 contains a half note G2, a quarter note F2, a quarter note E2, and a quarter note D2, all beamed together. Measure 258 contains a half note G2, a quarter note F2, a quarter note E2, and a quarter note D2, all beamed together. Measure 259 contains a half note G2, a quarter note F2, a quarter note E2, and a quarter note D2, all beamed together. Measure 260 contains a half note G2, a quarter note F2, a quarter note E2, and a quarter note D2, all beamed together. Measure 261 contains a half note G2, a quarter note F2, a quarter note E2, and a quarter note D2, all beamed together. Measure 262 contains a half note G2, a quarter note F2, a quarter note E2, and a quarter note D2, all beamed together. Measure 263 contains a half note G2, a quarter note F2, a quarter note E2, and a quarter note D2, all beamed together.

264

Musical staff in bass clef with common time signature. Measure 264 contains a half note G2, a quarter note F2, a quarter note E2, and a quarter note D2, all beamed together. Measure 265 contains a half note G2, a quarter note F2, a quarter note E2, and a quarter note D2, all beamed together. Measure 266 contains a half note G2, a quarter note F2, a quarter note E2, and a quarter note D2, all beamed together. Measure 267 contains a half note G2, a quarter note F2, a quarter note E2, and a quarter note D2, all beamed together. Measure 268 contains a half note G2, a quarter note F2, a quarter note E2, and a quarter note D2, all beamed together.

rit.

269

Musical staff in bass clef with common time signature. Measure 269 contains a whole rest. Measure 270 contains a whole rest. Measure 271 contains a whole rest. Measure 272 contains a whole rest. Measure 273 contains a whole rest. Measure 274 contains a whole rest. Measure 275 contains a whole rest. Measure 276 contains a whole rest.

277

Musical staff in bass clef with common time signature. Measure 277 contains a whole note G2. Measure 278 contains a whole note G2. Measure 279 contains a whole note G2. Measure 280 contains a whole note G2.